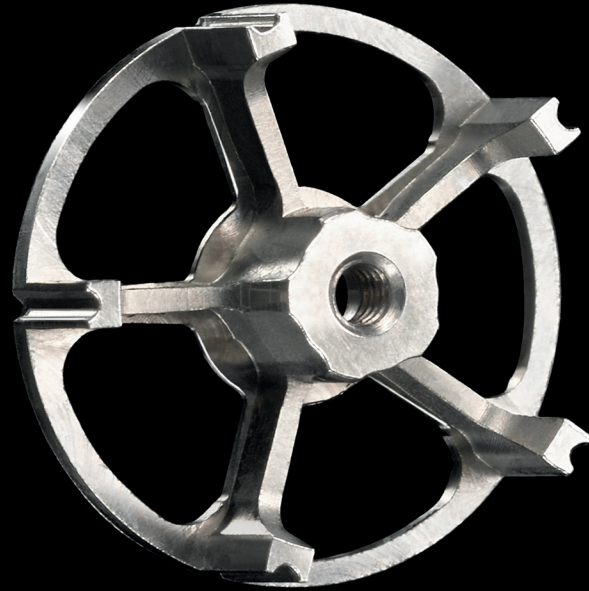


^W
pibor iso^{SA}



DESIGNING THE IMPOSSIBLE

Raising our client's expectations is the key to success as an outstanding technical company.

At Pibor ISO SA we share this business vision!



A STRONG COMPANY CULTURE

Pibor ISO SA is an independent family business, founded in 1952. We remain attached to tradition, while encouraging a very modern management culture, 100% focused on client satisfaction.

Our vertical production encompasses more than forty professionals, all specialising in the manufacture of micromechanical parts and other production processes.

Sixty years of research, analysis and development provide the company's engineers with all the knowledge and expertise required to support our clients in meeting their objectives.

FROM THE INITIAL DESIGN TO THE FINISHED PRODUCT

At Pibor ISO SA, we can start your project from an initial design or an advanced study.

Design of parts by our R&D department



Manufacture of parts with machines that are constantly renewed

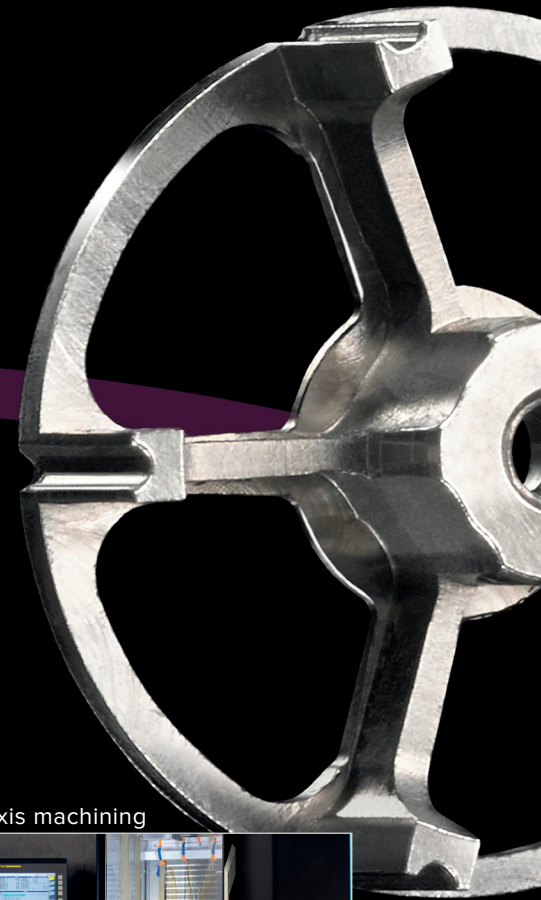


5-axis machining



Our staff will listen to you and give you their advice. Whatever the degree of complexity of your requirement, manufacture will require expertise in many craft and industrial techniques, so that every part is faultless, both in form and functionality. It is the combination of all these skills that makes the difference. It is what gives Pibor ISO SA its identity.

WHETHER IT IS ABOUT AN IDEA OR A DESIGN, OUR SPECIALISTS ARE HERE TO HELP YOU





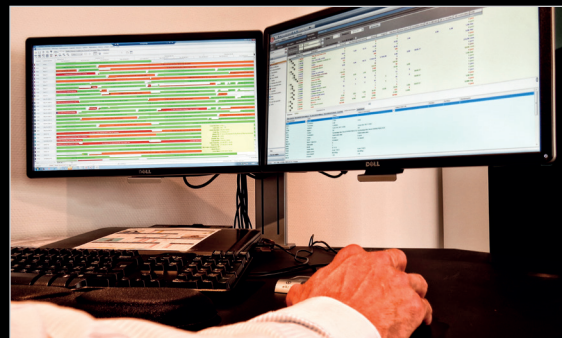
AREA OF EXPERTISE

Building on its extensive experience and skills in watchmaking, Pibor ISO SA is diversifying into other areas of expertise such as micromechanics, jewellery, medical devices, dentistry, automotive and aeronautics.

FULFILLING OUR COMMITMENTS

Powerful production management tools together with permanent investment in the renewal of our stock of machines to match developments in market requirements enable us to process any order to tight deadlines. Our management has

made the choice to respond effectively, work in compliance with environmental and social criteria and fulfil its commitments.



SWISSMADE

Pibor ISO SA guarantees the quality of your products and the reputation of the Swiss watchmaking tradition. All your components are manufactured 100% in our factory in Glovelier.



ENVIRONMENTAL AND SOCIAL POLICY

Pibor ISO SA attaches great importance to the protection of the environment and human rights alongside its commercial success.

RJC COP certification aims to promote responsible ethical, social and environmental practices. It recognises the company policy which has been implemented by Pibor ISO SA for many years.

The requirements for RJC CoC certification are in terms of responsible sourcing and traceability of precious metals throughout the supply chain, and up to delivery to our clients. 100% of the gold and platinum we deliver is certified RJC CoC.

PIBOR ISO SA

Route de la Transjurane 20
2855 Glovelier (JU)
Tél : +41 324 270 270
info@pibor.ch
www.pibor.ch

